



WT BURDEN

drainage&civils landscape street furniture



drainage&civils



Al Muntazah Street, Doha



AS-01 shaft Pumping Station

WHO WE ARE & WHAT WE DO

With over 80 years of worldwide expertise, as part of the burdens group, WTBurden specializes in all aspects of construction materials, from design to installation.

Serving the GCC market for over 14 years, WTBurden is a key partner, committed to help engineers, specifiers, developers, consultants, contractors shaping the middle east, from below to above the ground.

Representing leading companies from around the world, WTBurden

is committed to provide unrivalled customer service, offering full design services and onsite inspection before, during and after installation.

Our divisions

WTBURDEN
street furniture

WTBURDEN
landscape

WTBURDEN
drainage&civils

WT BURDEN

street furniture

Benches
Bollards
Tree Grills
Bike Racks
Planters
Litter Bins
Shade Structures
Playground Equipment

WT BURDEN

landscape

Tree Anchoring
Structural Soil Systems
Aluminum Edging
Tree Ties
Root and Salt Barriers
Geo-synthetics
Green Roofs
Retaining Walls
Green Walls

WT BURDEN

drainage&civils

GeoCellular Tanks
Oil and Grease Separators
Downstream Defenders
Up-flo Filters
Vortex Flow Control Devices
Drop Shafts
Sewage Treatment Products
Penstocks
Linear Drainage
UV Systems for Open Channel

Content

Arch Infiltration/Attenuation Tanks

GeoCellular Infiltration Tanks

Filter Media

Spel Oil Separators

Kingspan Oil Separators

Grease Separators

Band Seal Couplings

Downstream Defenders

Up-Flo Filters

Vortex Flow Control Devices

Hydro Vortex Drop Shafts

Hydro Grit Cleanse

Hydro Grit King

Sludge Screens

In Ground Power Units

Above Ground Power Units

Structural Drainage

Penstocks

Linear Drainage

UV Systems for open channel

Disposable Formworks

Our Projects

drainage&civils

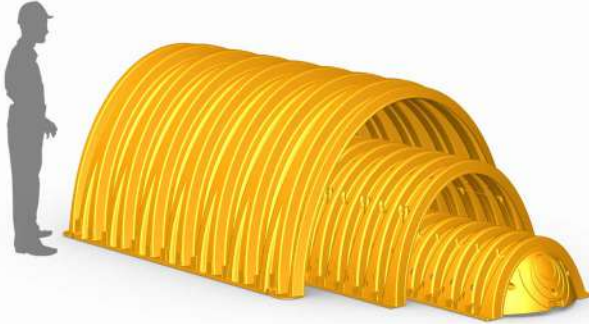






Arch Infiltration/ Attenuation Tanks





Variety of chamber sizes: SC310, SC740 and MC3500.

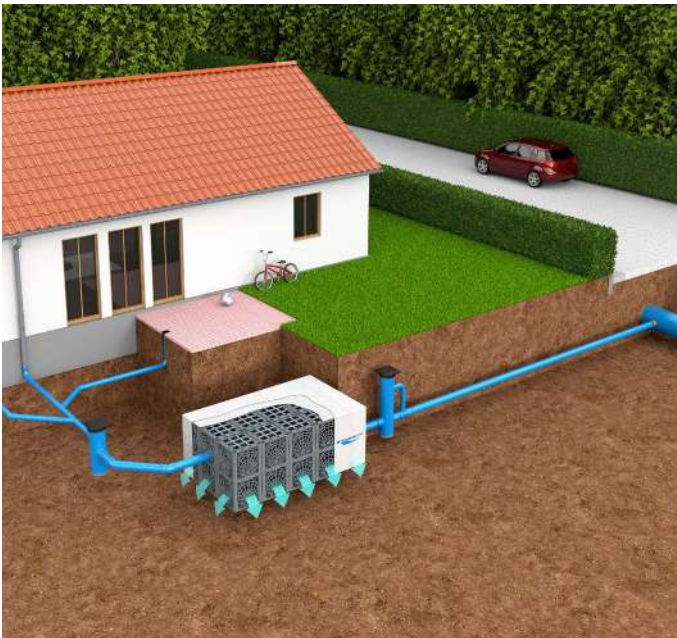


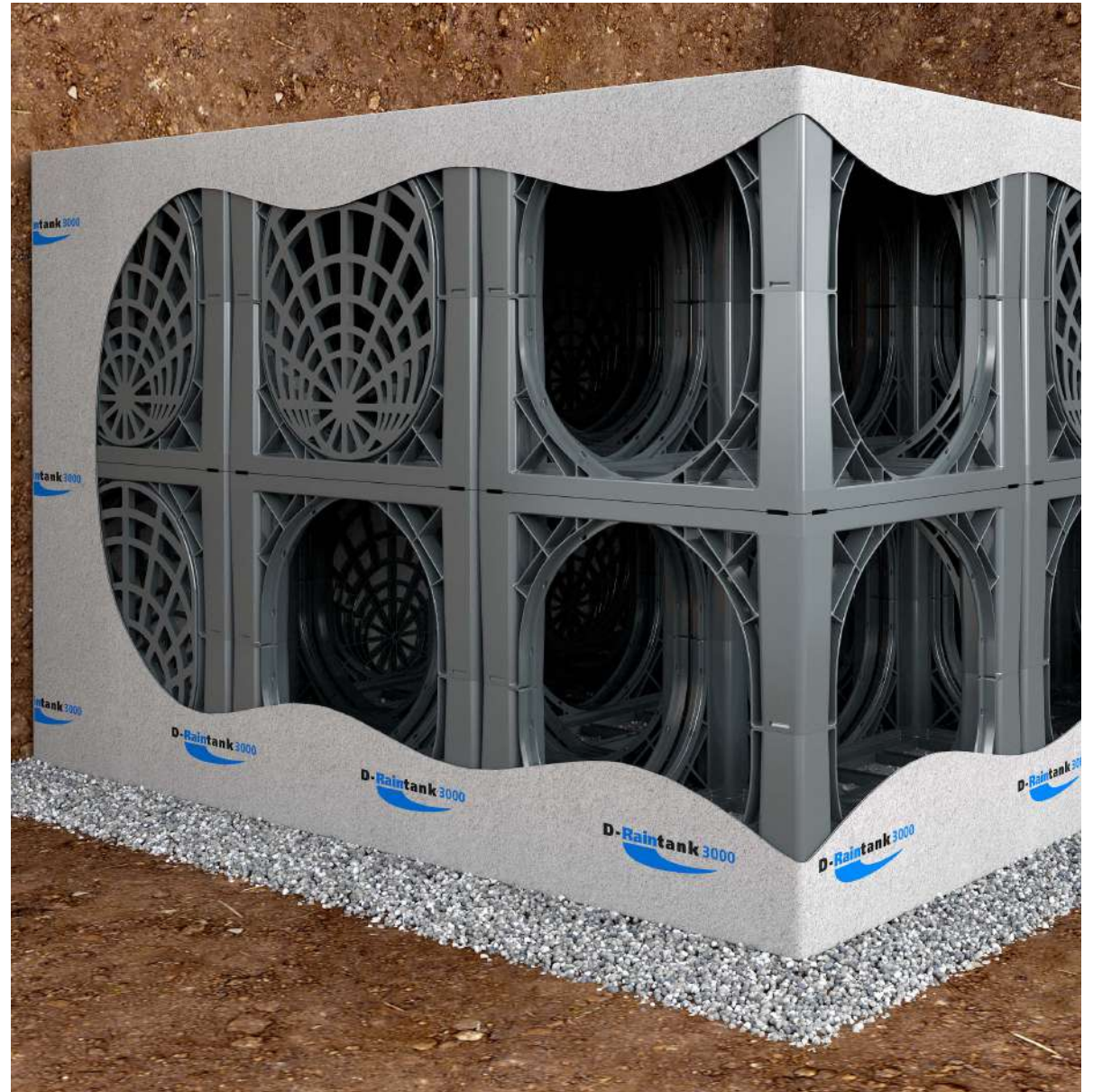
- StormTech system is designed primarily to be used under car parks, roadways and heavy earth loads saving valuable land and protecting water resources for commercial and municipal applications.
- Large capacity that fits very tight footprints.
- Provides the strength of concrete vaults.
- Various chamber heights (400, 760 and 1140mm).



Geo Cellular Infiltration/ Attenuation Tanks

- DRAINTANK 3000 has been especially developed for local rain water drainage and control.
- Designed for underground use with a storage capacity of 95 % of total volume.
- Has a modulus of elasticity $> 3000\text{N/mm}^2$.
Material: UPVC. L x W x H: 600 x 600 x 600mm.

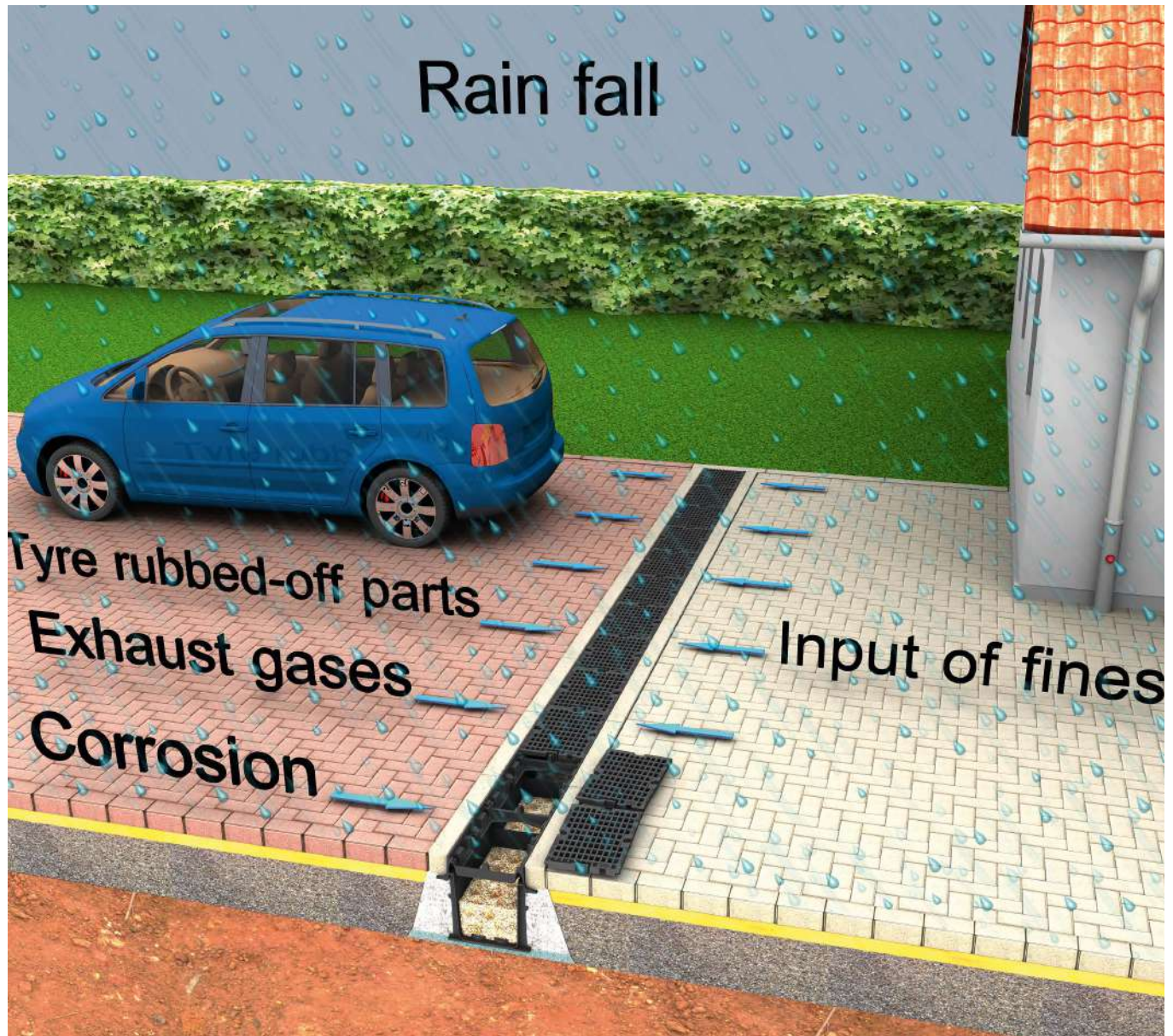


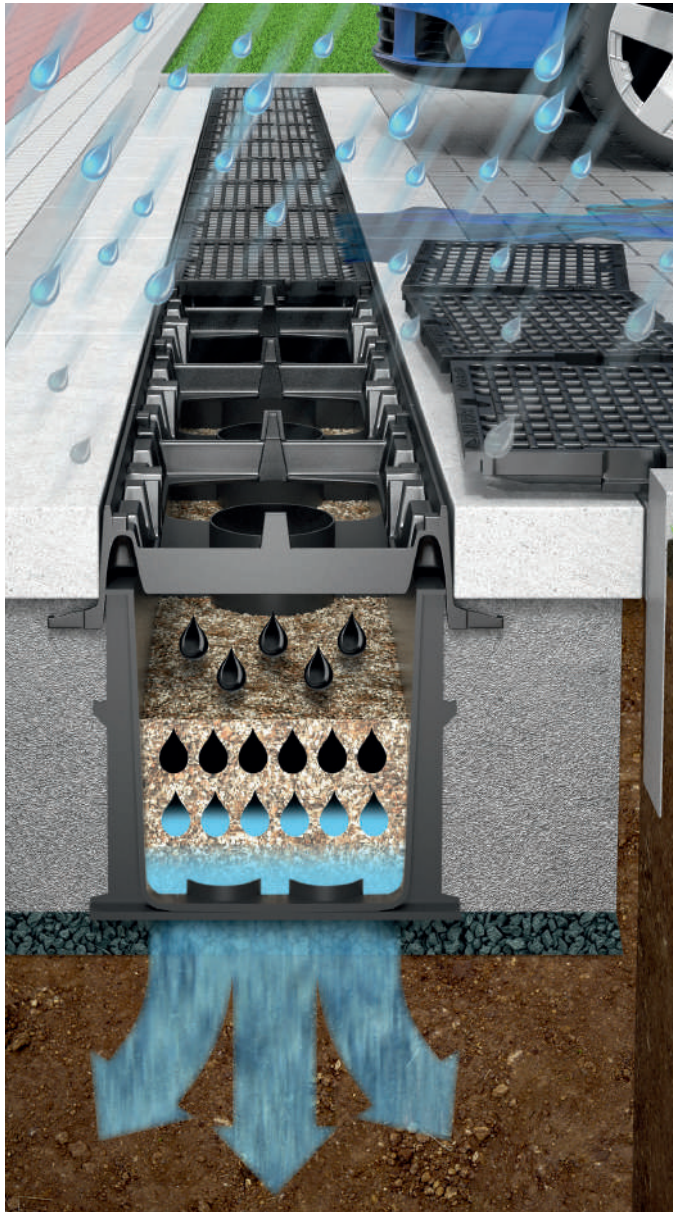




Filter Media

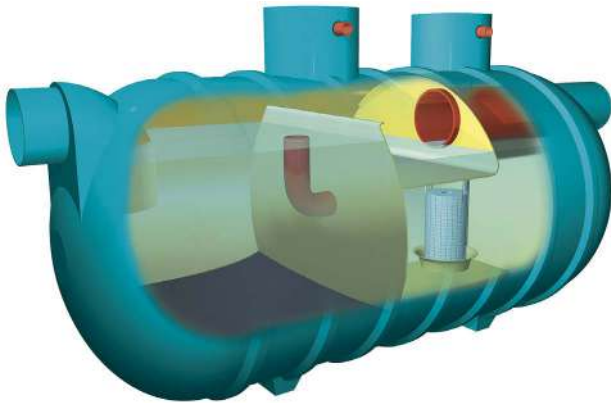
- D-Rainclean consists of Filter-Media for the treatment of polluted rain water run off.







Bypass and Full Retention/Oil Separators





- SPEL Separators are designed to separate out the hydrocarbons as required by the Environment Agency's Pollution Prevention Guidelines PPG 3.
- Carry a 25 year shell Warranty
- Life expectancy in excess of 50 years.
- Large models for more than 1000l/s treatment flow and peak flows up to 10,000l/s.



Bypass and Full Retention/Oil Separators



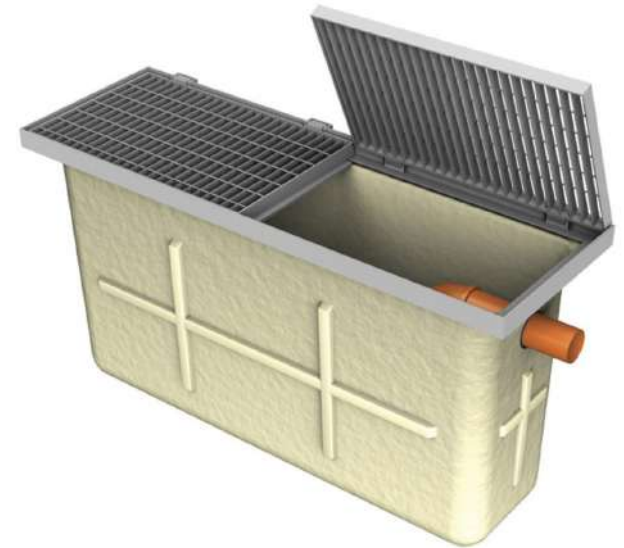


- Fuel and Oil separators Complying with British and European Standards (EN 858-1 and 858-2).
- Class I and Class II, bypass and full retention separators.





Grease Separators



- Grease separators are an effective and hygienic method of separating fat and grease from wastewater flow.
- Grease separators are designed for small canteens and public houses, as well as for larger applications such as hotels and big restaurants.
- Models with flows up to 24l/s



NAYLOR
BAND-SEAL
Made in the UK
Excellent Construction Products

Band Seal Couplings



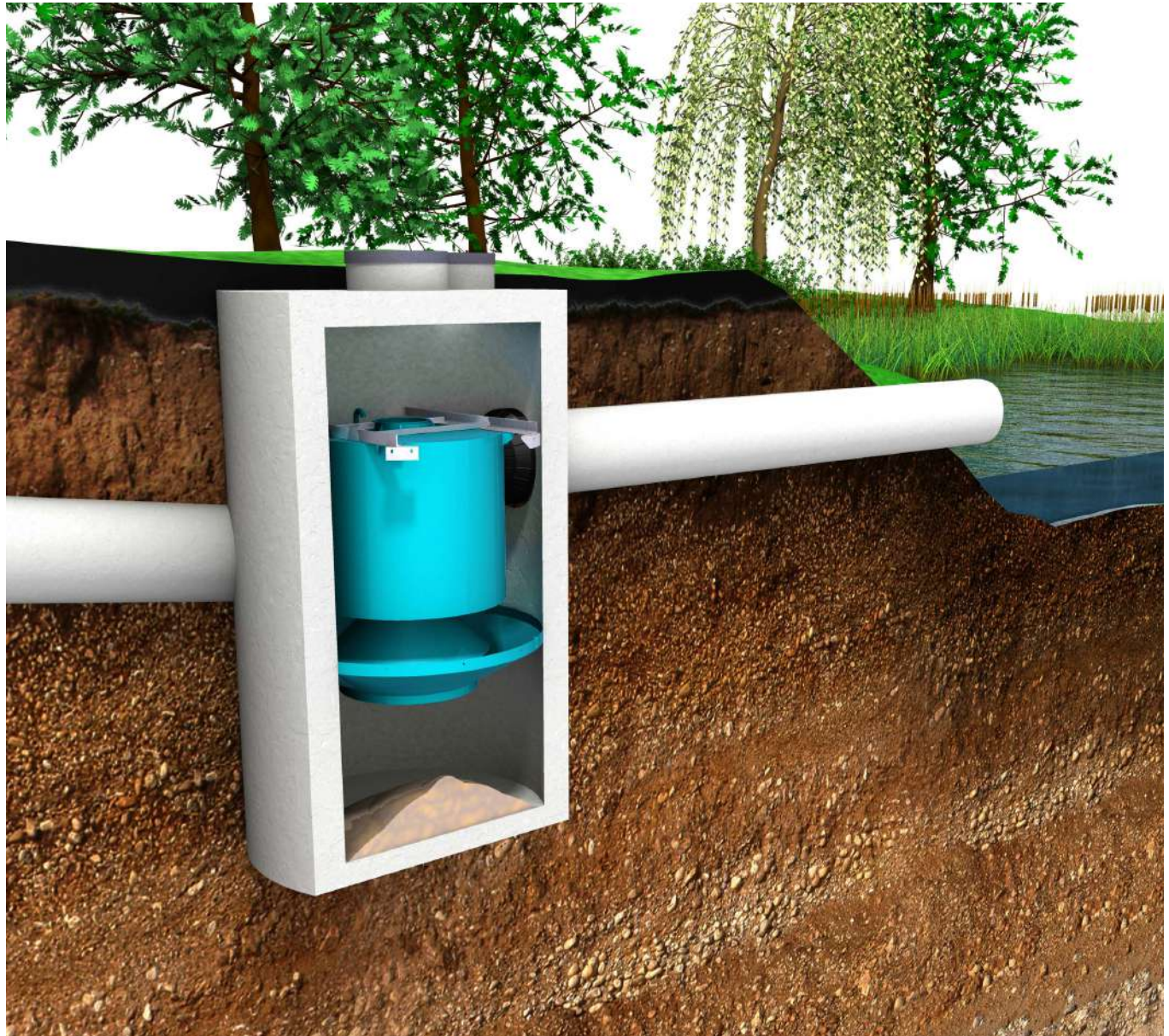
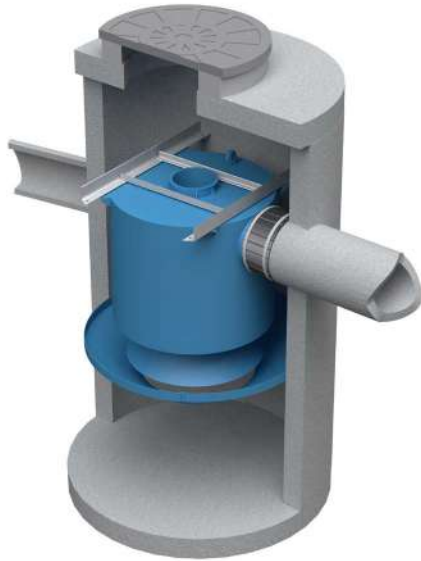


- Flexible couplings used for jointing pipes of both similar and different materials and sizes.
- The extensive range connects pipes from 24mm to over 2000mm nominal size (DN).





Downstream Defenders

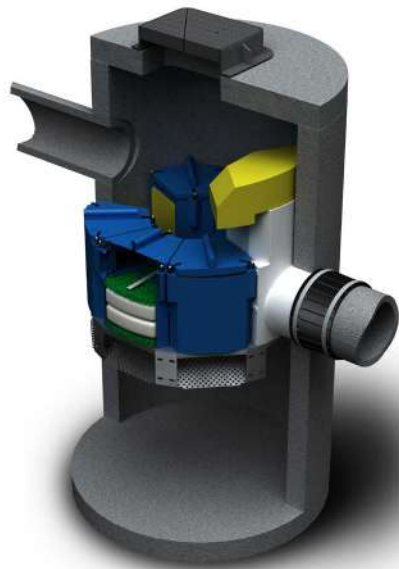


- The Downstream Defender is an advanced vortex separator used to treat stormwater runoff in pretreatment or stand alone applications.
- Removes total suspended solids (TSS), floatable trash and petroleum products from stormwater runoff.
- Treats the entire storm with no washout or untreated bypass flows.
- Treats flows up to 700l/s per unit.

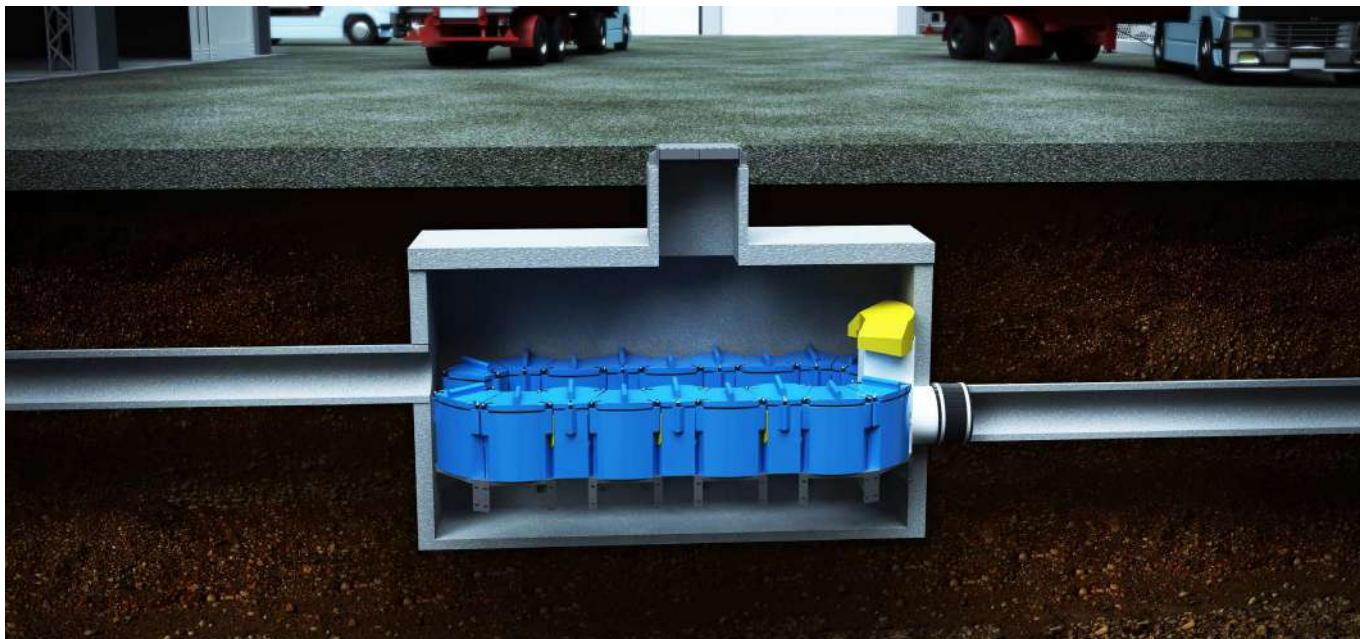


Hydro
International 

Up-Flo Filters



- The Up-Flo® Filter is a multi-stage stormwater treatment system with high-rate stormwater filtration and longer media life.
- Removes sediment, nutrients and metals from stormwater run off.
- Sedimentation, screening and filtration in one structure.

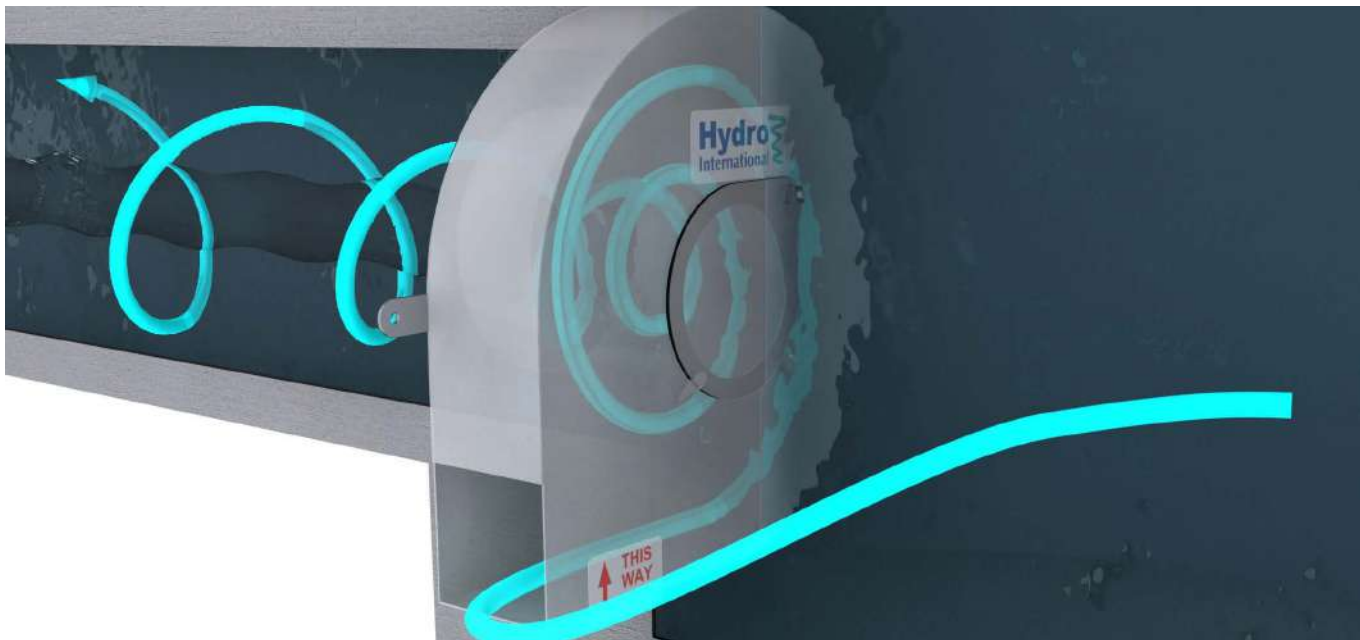




Vortex Flow Control Devices



- The Hydro-Brake Optimum vortex flow control provides customized water quantity management for stormwater, foul or combined water across a wide range of flows and for a variety of applications.





Hydro Vortex Drop Shafts

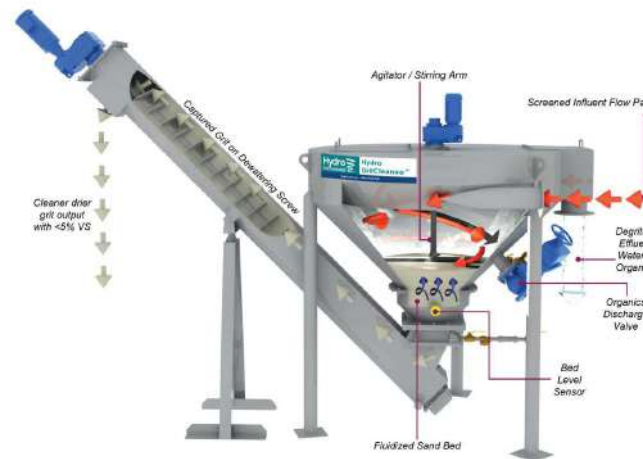
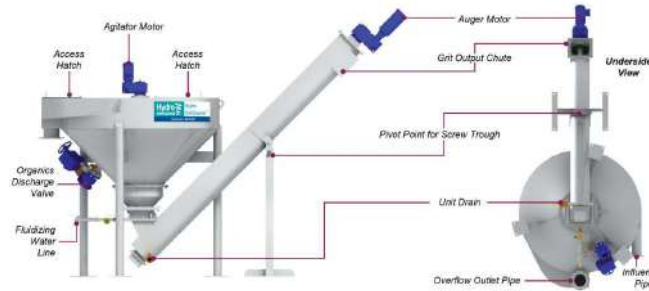




- The Hydro Vortex Drop Shaft, is a self activating energy dissipation system with no moving parts, designed to safely drop water or sewage from virtually any height in order to protect the infrastructure from noise, vibration, and damage.



Hydro Grit Cleanse

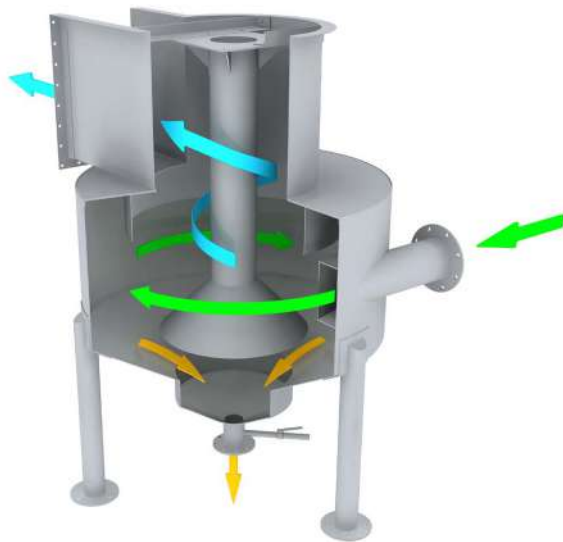
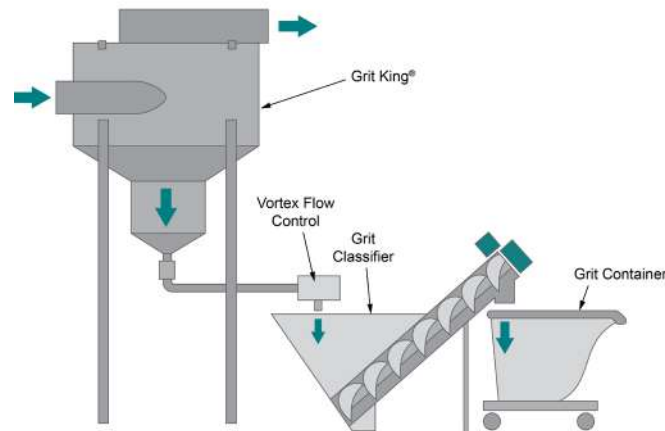


- Hydro GritCleanse is a fluidized bed grit washing and dewatering system.
- The Hydro GritCleanse fluidized bed grit washing system significantly reduces volatile solids while retaining 95% of grit $\geq 106 \mu\text{m}$



Hydro
International

Grit king



- The Grit King is a compact, unpowered advanced grit management system that removes 95% of 106 μm particles or larger, preventing costly downstream grit abrasion and deposits.



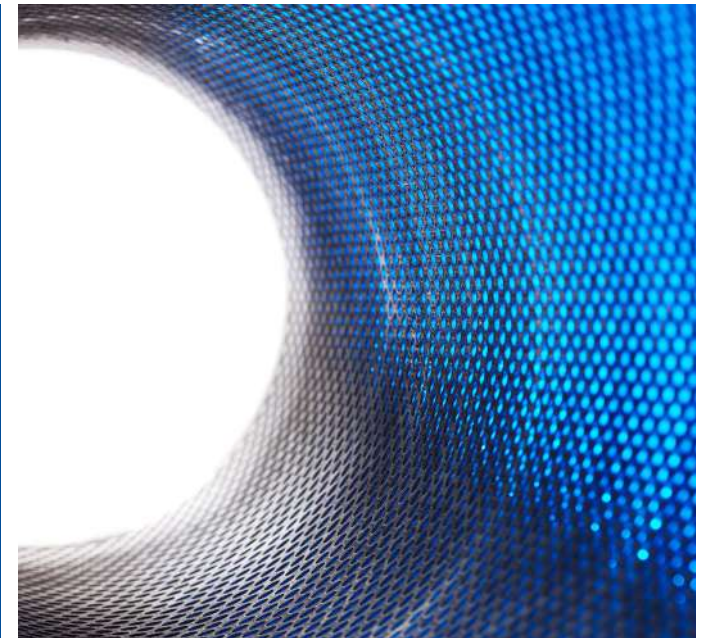




Sludge Screens



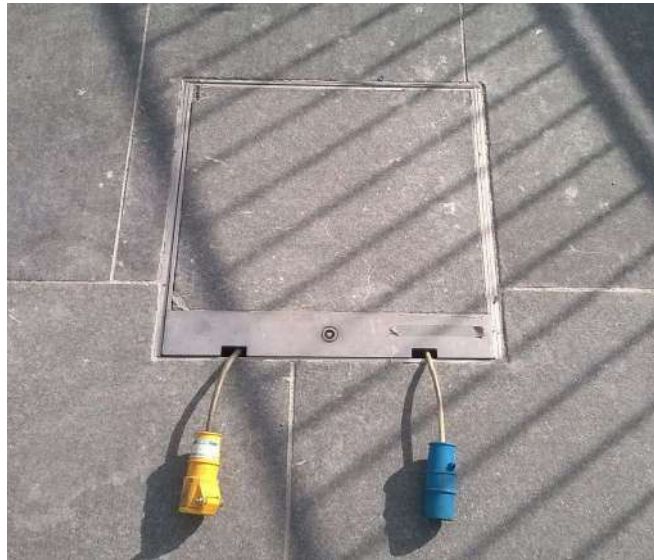
- Remove and compact solids from wastewater sludge to reduce solids handling costs and improve downstream treatment efficiency.







In Ground Power Units



- Excellent for trading areas, open air areas with events and exhibitions where temporary power is required.
- For additional safety the lids may be closed during operation.
- Made of stainless steel 316L
- Customized sizes to suit exact poring slab dimensions.







Above Ground Power Units

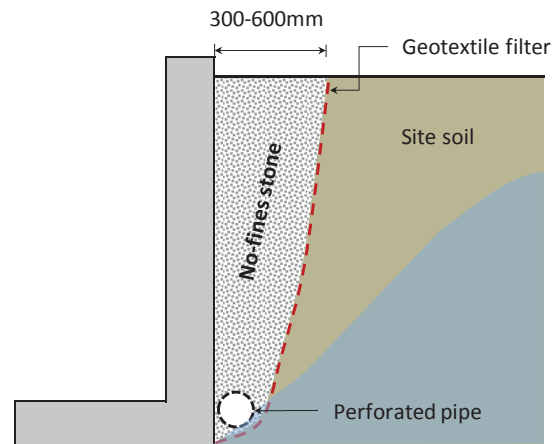
- Outdoor Power Outlet Pillar available in 2 heights, designed to house standard or industrial sockets. The structure is made of aluminum with granite coating.



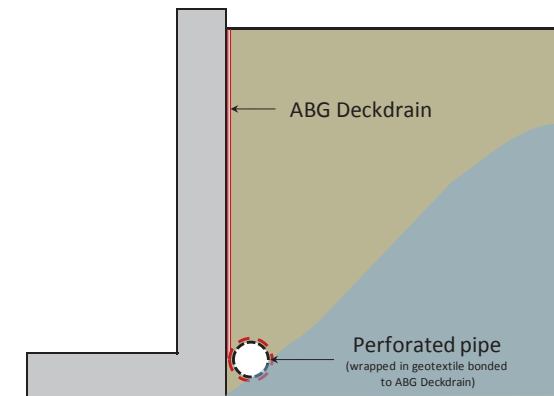


abg | creative
geosynthetic
engineering

Deckdrain



Traditional Method



Using ABG Deckdrain



- Horizontal or vertical drainage applications.
- Enhances the performance of structural waterproofing by providing an additional barrier that prevents the majority of the water reaching the liner.



Penstocks



- Penstocks suitable for different types of applications with a highly flow control for waste treatment plants, irrigation, hydraulic works and hydro electric power plants.
- From sizes 150mm x 150mm to 1200mm x 1200mm.
- Option for Rising or Non Rising stem configurations.
- Suitable for actuation with manual, electric, pneumatic or hydraulic actuators.





Linear Drainage



- Linear drainage supplied as complete channel and grating systems to meet the precise requirements of residential, commercial and industrial building projects.





UV Systems for Open Channel



- It is commonly used for municipal wastewater treatment facilities and aquaculture systems.
- Lamp banks are based on modular design and can be expanded to treat any flow. It is versatile and will fit into a variety of channel depths and widths.



abs Disposable
Formworks

Disposable Formworks





Fixed-Height Disposable Formworks For
Lightweight Fillings (5,10,15cm)



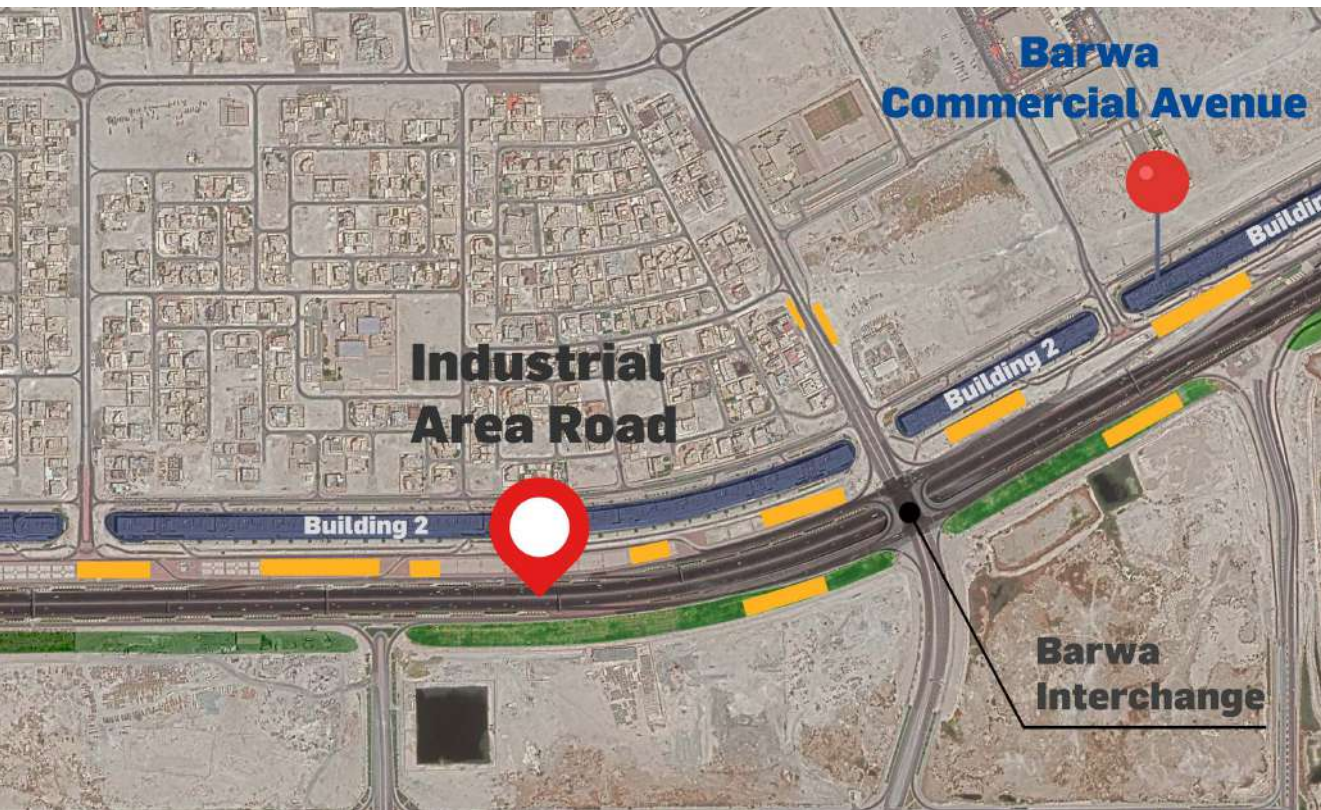
- The lightest solution to any filling problem; regardless of the height, only the weight of the topping concrete is added to the structure.
- The products are stackable, nesting in each other, providing enormous space efficiency.
- Reduced construction time: Construction activities on upper floors can proceed without having to wait for the filling application on lower floors, as the filling application can be done anytime, saving very valuable construction time.
- Fast and easy installation.
- Void space creation: The void space that gets created can be used for MEP (mechanical, electrical, plumbing) installations to pass through; columns have a net spacing of 59 cm.

An aerial photograph of a highway construction site. In the center, several parallel orange corrugated pipes are laid out in a trench. To the right, a multi-lane highway with white dashed lane markings stretches into the distance. The left side of the image is partially obscured by a series of blue, overlapping, horizontal bar-like shapes that create a sense of depth and movement. A large blue diamond shape is superimposed over the center-right of the image, containing the text 'Our Projects' in white.

Our Projects

Al Muntazah Street P012





— 26 Infiltration Tanks

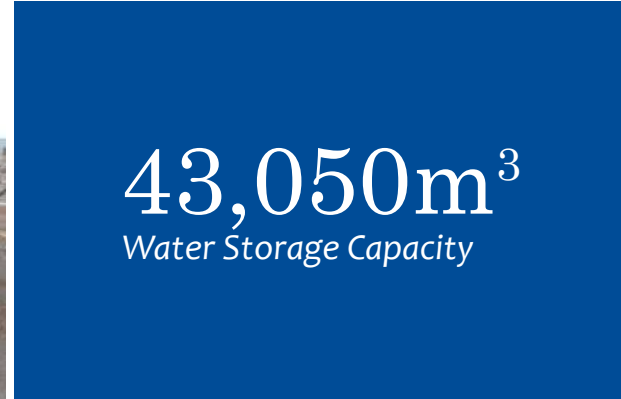
>3,100
Linear meter in length

Al Muntazah Street P012



83
Containers Shipped
from the USA



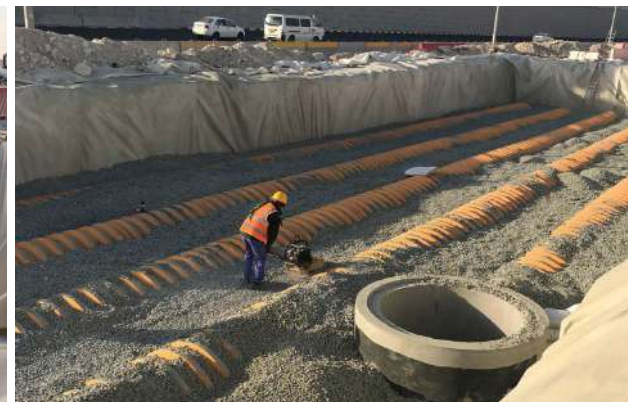


Al Muntazah Street P012

46 DownStream
Defenders



2 Drop Shafts
350x350mm - 8.7m drop
height - Flow 480l/s
900x750mm - 11.7m drop
height - Flow 3120l/s





7450 MC3500 Chambers

400 MC3500 Encaps

Bani Hajer North Phase 2, Package 7

Treatment train for
180lps flow rate



7 Hydro Brakes



Full Retention Oil Separator
2.7m dia - 9.6m long



20 Up flo
Filter Rings
Flow 180l/s



8 Downstream
Defenders
3m

AS-01 shaft Pumping Station



>7000l/s
Peak treatment flow rate



10 DownStream
Defenders
3m dia each





First installation of its kind
above ground

Al Khor Expressway Project (16-031)



>28,500l/s
Carrying combined



16 Vortex
Drop Shafts





Deepest Drop at **17.8m**

Qetaifan Island, CP08 A1&A2, Lusail City



$>6,300 \text{ l/s}$
Peak treatment flow rate



14 Downstream
Defenders





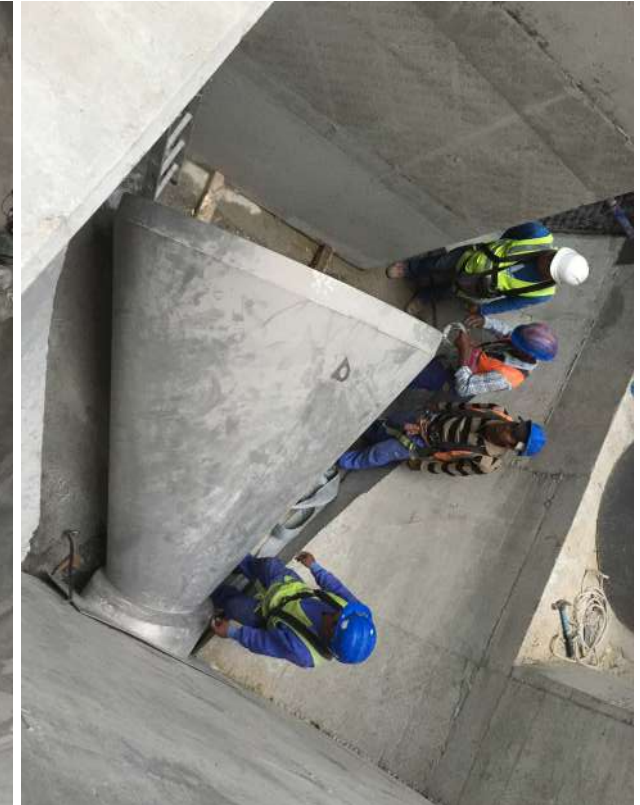
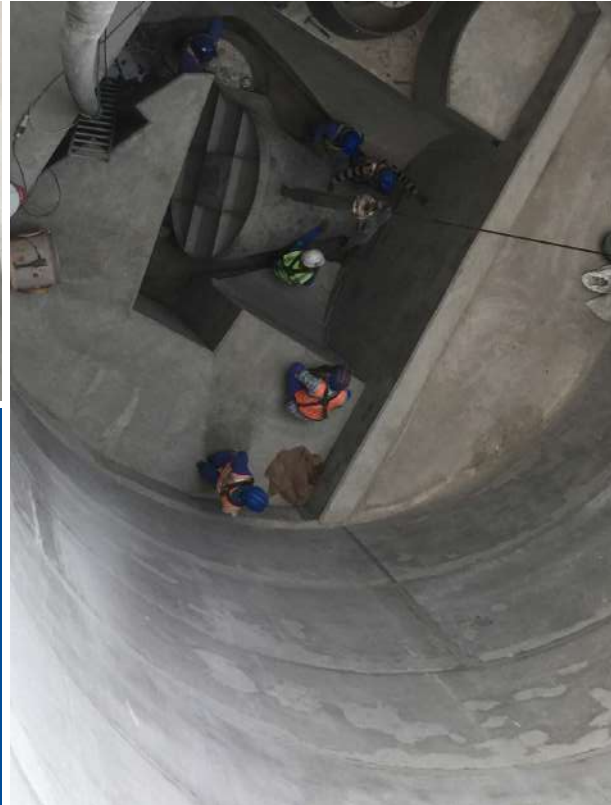
Protecting 14
sea outfalls

Al Rayyan Road Boom

200l/s flow - Head: **4m**
750l/s flow - Head: **8.5m**



2 Hydro Brake
units





Al Rayyan Training Football pitches



475m³

Water Storage
Capacity, distributed
into 9 different Tanks

E - Ring Road



>10,600l/s
Carrying combined



3 Vortex
Drop Shafts





Deepest Drop at
16.8m

IGU Crescent Park, Lusail



Type 3 containing 4 power sockets (16A or 32A) plus an RCBO, plus up to 4 RJ45 data points. All are IP67 rated.



IGU **600/600**
One of the largest
models



Drop the vacator hose to the base of the sump via the Central Access Port. Vacator out the sediment and gross debris off the sump floor.

Without entering the vessel, use the pole with the skimmer net to remove floatables and loose debris from the outer annulus of the chamber.

Downstream Defender Maintenance



Doha Industrial Area Package 3 - QS001-P03

>20,250l/s
Carrying combined



16 Vortex
Drop Shafts



One of the largest
Hydro Brake in Doha at
6000lps flow rate -
14m head

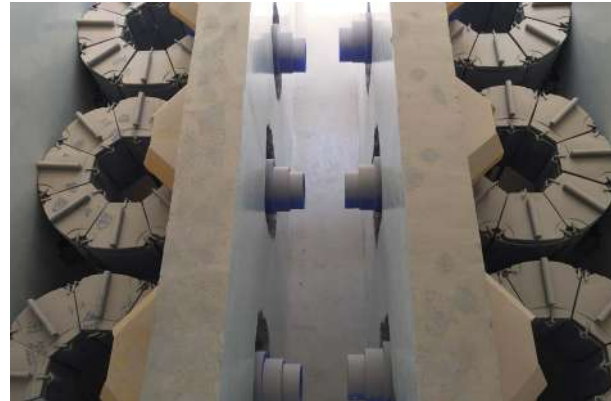


Size of Hydro brake
8260 x 4180 x 5610 mm



Deepest Drop at
9.55m

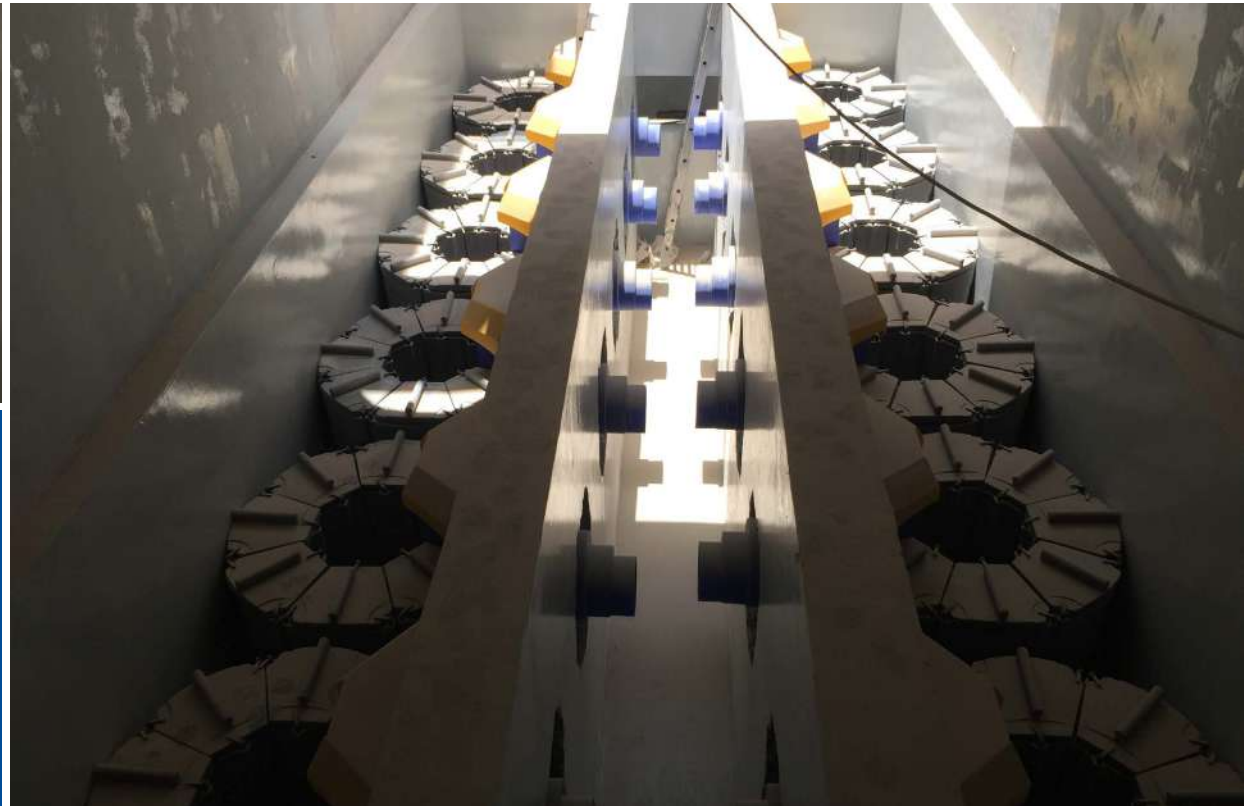
Bani Hajer North DN110 P01, Mall of Qatar



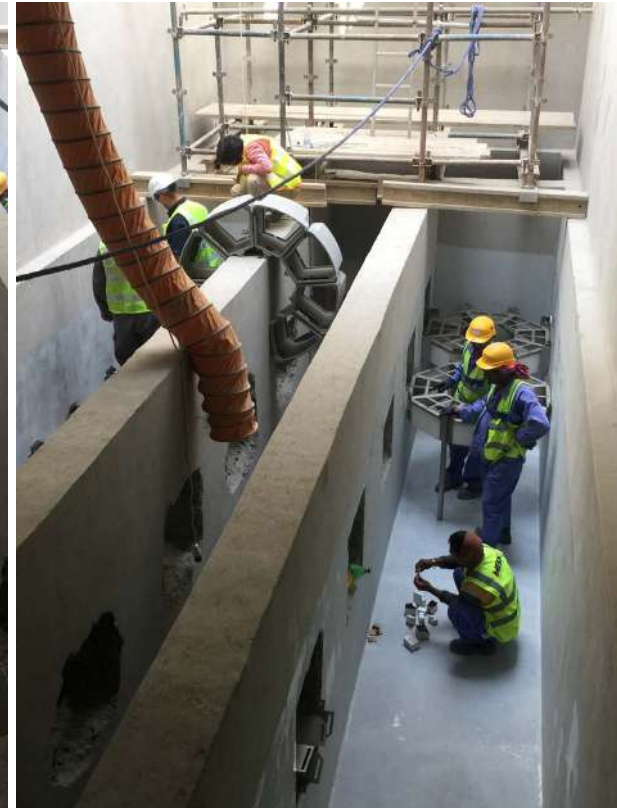
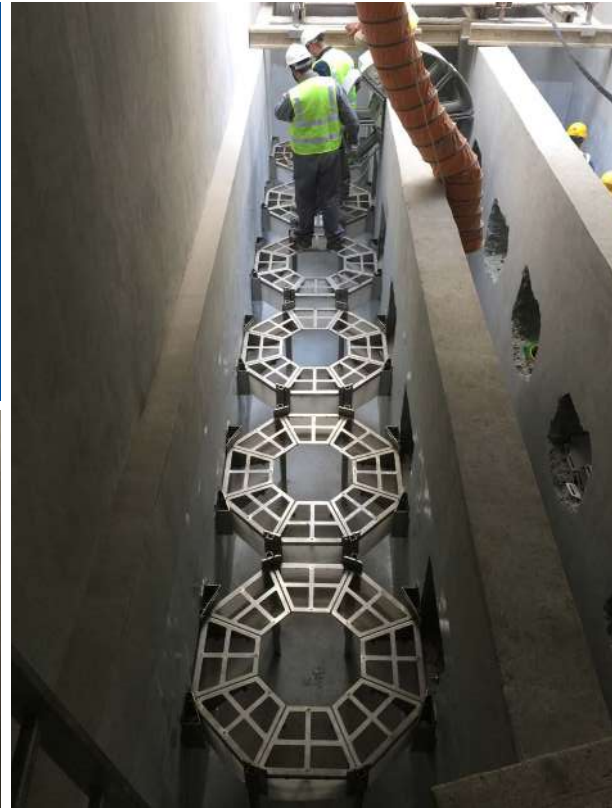
Treatment train for
125lps flow rate



Hydro Brake unit



14 Upflo Filter Rings



Downstream Defender 2.4m



Full Retention Oil Separator 2.7m dia - 8.5m long

WOQOD Stations

Serving **more than 40**
Woqod Stations





>40 Oil Separators



Doha Port Redevelopment

7 *Sea outfalls*





$>3,500 \text{ l/s}$
Peak treatment flow rate



Al Rayyan Support Works DN110-P06



Hydro Brake unit



Treatment train for
480lps flow rate



16 Upflo Filter Rings Flow 120l/s



Downstream Defender 3m



Full Retention Oil Separator 4.1m dia - 16m long

Milaha Logistics City



More than **9m** depth Oil
separator, **3.65m** dia -
10m length

Hydro Brake Flow -
1550l/s unit

195m³ of filter media
covering an area
of 390m²



West Wakrah Phase 2, Package 4



7
Containers Shipped
from the USA

Crescent Park Lusail CP10E2



$>1400\text{m}^3$
Water Storage Capacity



20,000m³
Water Storage Capacity

Wadi Aba Saleel Road



Single row conveyance
and Soak away system



8000 SC740 Chambers

Education City R&D Centre

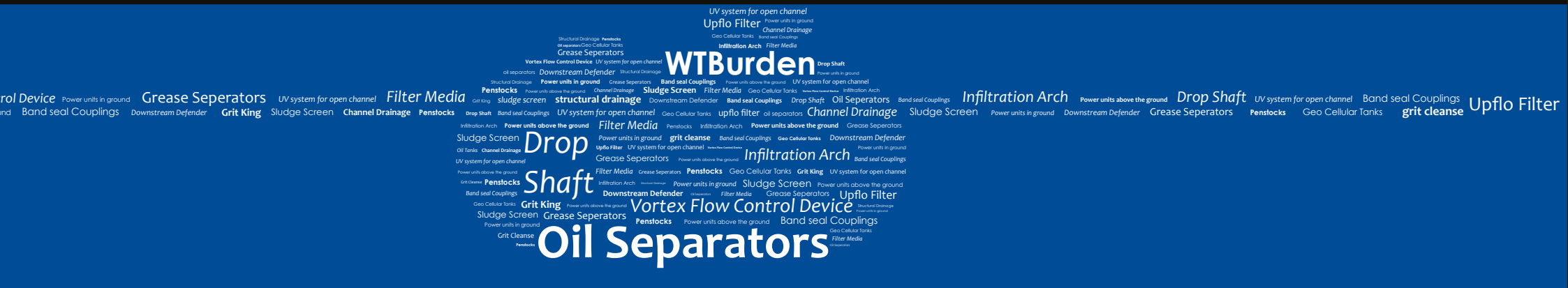
575m^3
Water Storage Capacity





Education City Nursery

476m³
Water Storage Capacity





Burden World Trading W.L.L.

1st Floor, Al Muftah Plaza Bldg, Al Rayyan Road
Freej Bin Mahmoud, P.O. Box: 21424, Doha-Qatar

T +974 4490 5461

F +974 4490 5464

www.wtburden.com